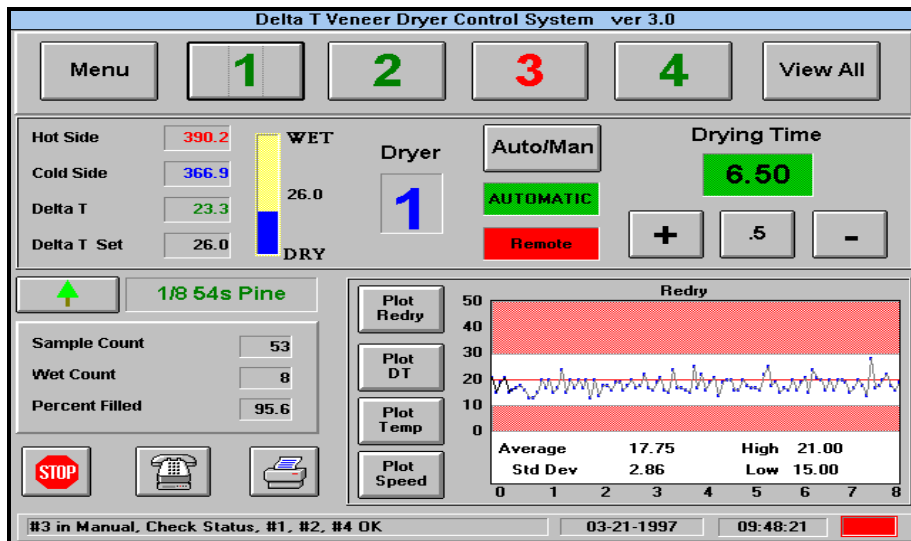


Delta T Veneer Moisture Control Technology

Increased Production Better Gluing
Less Shrinkage & Breakage Energy Savings Cooler Drying

The **DELTA T Veneer Dryer Controller** measures veneer moisture inside jet or longitudinal dryer **before veneer exits the dryer**. This allows sufficient time to make changes in dryer operating conditions in order to maintain a consistent veneer moisture content. *After-the-fact* control systems use % redry for dryer control. Such systems cycle between over & under-dried veneer. The **Delta T** eliminates over & under-dried veneer. As a result, quality is improved, production is



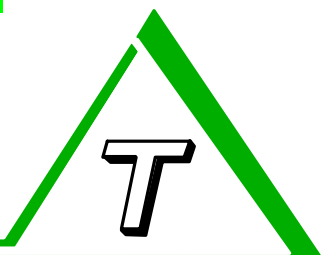
All systems capable of multiple dryer control, networking capability, remote access, and comprehensive report printing.

On-line service and support through modem communications. The **DTI Advisor** allows in-process diagnostics and rapid feedback of results.

Plot Delta T, temperatures and redry history as well as other SPC parameters.

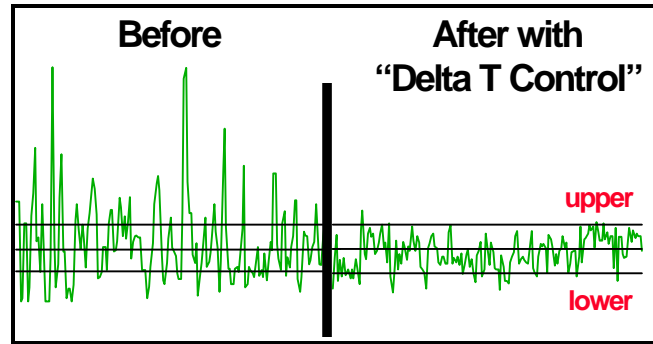
<http://www.moisturecontrols.com>

Drying Technology, Inc.
 P.O. Box 1635 Silsbee, TX 77656
 Tel: 409-385-6422 Fax: 409-385-6537



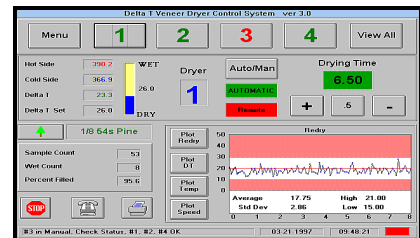
The example on the left, **Before Delta T**, shows the inability of the current control to produce veneer within moisture tolerance.

The example on the right, **After Delta T**, clearly demonstrates the advantage of using the Delta T. The Delta T causes the dryer to react to variations in entering moisture, temperature fluctuations, and change-overs pro-



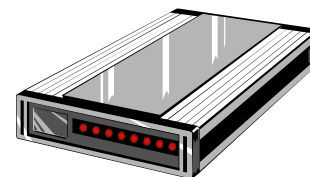
Features

Customized control screens are standard features on the Delta T Veneer Dryer Control System. User often participate in screen development. The *Windows* operating environment and centralized location of all process variables simplifies dryer control.



The System also includes either an industrial workstation, for on the plant floor configurations, or a desktop PC for control room environments. Both are Pentium based and feature color monitors. Note: the workstation features

A modem, for on-line communications, is included with the System. Program updates, service, system diagnostics, etc. can all be performed via modem within minutes. Delta T down-time (\$\$) is reduced.

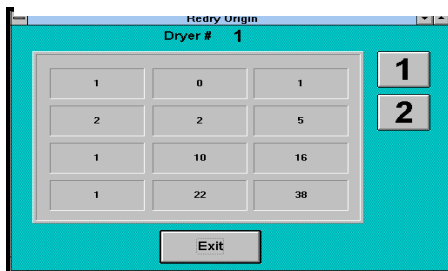


..... plus many more!

Options

Percent Filled Display - Large LED display located at in-feed. Displays current dryer percent filled. Keeps personnel motivated and informs management of current produc-

LARGE DIGIT DISPLAY



Redry Origin Display - show redry % by deck and position. Useful in early detection of dryer-related moisture (i.e. airflow) problems.

Veneer Width Monitor - marks sheets that are below a minimum width setpoint.